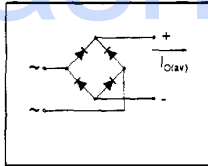


DF SERIES

1A Single Phase D.I.L. Rectifier Bridge

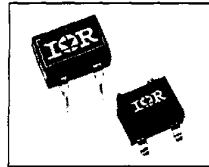
- Leads on standard 0.1" grid.
- Suitable for automatic insertion.
- High surge current capability.
- Fully characterised data.
- Wide temperature range.
- Surface mount option.



$I_{O(av)} = 1.0 \text{ A}$
 V_{RRM} range
 50 to 100V

Description

The DF Series of Single Phase Rectifier Bridges consists of four silicon junctions encapsulated in a 4 pin D.I.L. package. These devices are intended for general use in industrial and consumer equipment.



Electrical Specification

	DF....	Units	Conditions
I_D Maximum DC output current	1.0	A	$T_{amb} = 40^\circ\text{C}$, Resistive or inductive load
	0.8	A	$T_{amb} = 40^\circ\text{C}$, Capacitive load
I_{FSM} Maximum peak one cycle, non-repetitive surge current	30	A	$t = 10\text{ms}, 20\text{ms}$
	31	A	$t = 8.3\text{ms}, 16.7\text{ms}$
I^2t Maximum I^2t capability for fusing	4.5	A^2s	$t = 10\text{ms}$
	4.1	A^2s	$t = 8.3\text{ms}$
	6.4	A^2s	$t = 10\text{ms}$
	5.8	A^2s	$t = 8.3\text{ms}$
I^2vt Maximum I^2vt capability for fusing	64	A^2vs	$t = 0.1$ to 10ms , no voltage reapplied
V_{FM} Maximum peak forward voltage per diode	1.0	V	$I_{FM} = 1.0\text{A}$, $T_j = 25^\circ\text{C}$
I_{RM} Typical peak reverse leakage per diode	5	mA	$T_j = 25^\circ\text{C}$, $100\% V_{RRM}$
	100	mA	$T_j = 150^\circ\text{C}$, $100\% V_{RRM}$
f Operating frequency range	400 to 1000	Hz	
V_{RRM} Maximum repetitive peak reverse voltage range	50 to 1000	V	

Thermal and Mechanical Specifications

	DF....	Units	Conditions
T_{jT} Operating and storage temperature range	-40 to 150	$^\circ\text{C}$	
$R_{\theta JA}$ Thermal resistance, junctions to ambient	60	K/W	
W Approximate weight	0.6 (0.02)	g (oz)	

Voltage Specifications

Part Number	V_{RRM} : Maximum repetitive peak reverse voltage	V_{RSM} : Maximum non-repetitive peak reverse voltage
	V	V
DF005	50	80
DF01	100	150
DF02	200	300
DF04	400	500
DF06	600	700
DF08	800	900
DF10	1000	1100

Part Numbering

To specify standard outline add 'M' suffix, e.g. DF06M etc.

To specify surface mount option (S.M.D.) add 'S' suffix, e.g. DF04S etc.

To specify tape reel option add 'TRR16' or 'TR16' suffix, e.g. 1B06STRR16, 1B02STR16 etc.

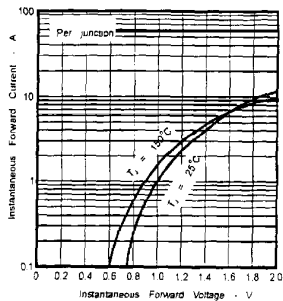


Fig. 1 - Forward Characteristics

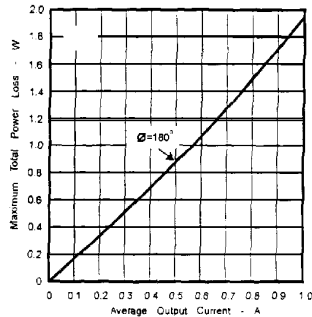


Fig. 2 - Power Loss Characteristics

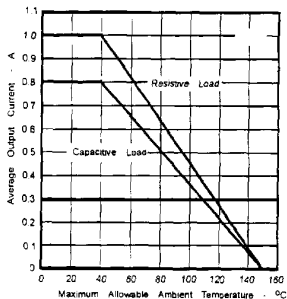


Fig. 3 - Current Ratings

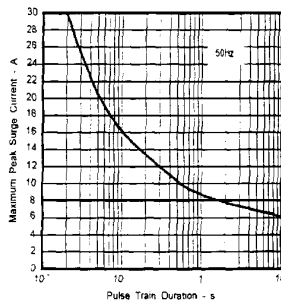
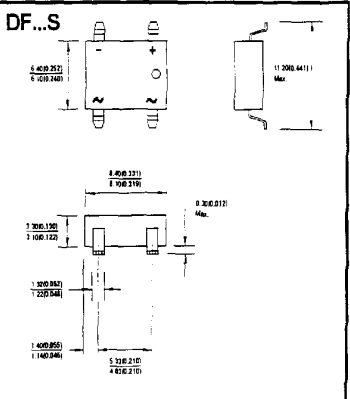
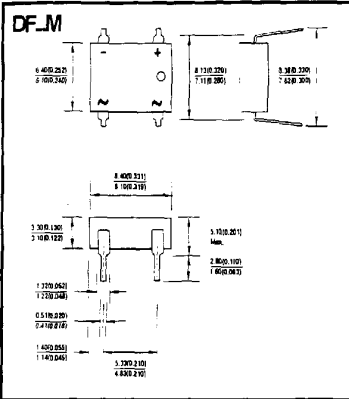


Fig. 4 - Non-Repetitive Surge Ratings

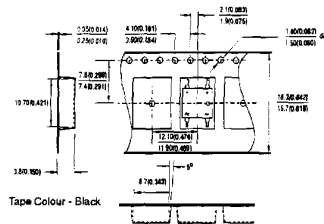


DF SERIES

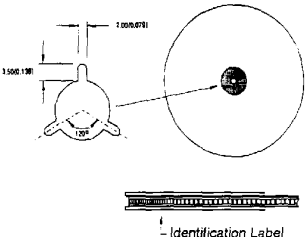
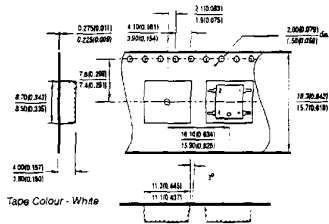


Tape Reel

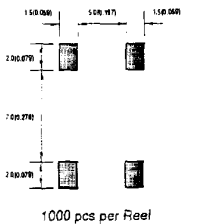
Tape Reel Dimensions for DF..TRR16



Tape Reel Dimensions for DF..TR16



Footprint and Pad Dimensions



All dimensions in millimetres(inches)