

Amphenol

MFM

Military Fibre Optic Miniature



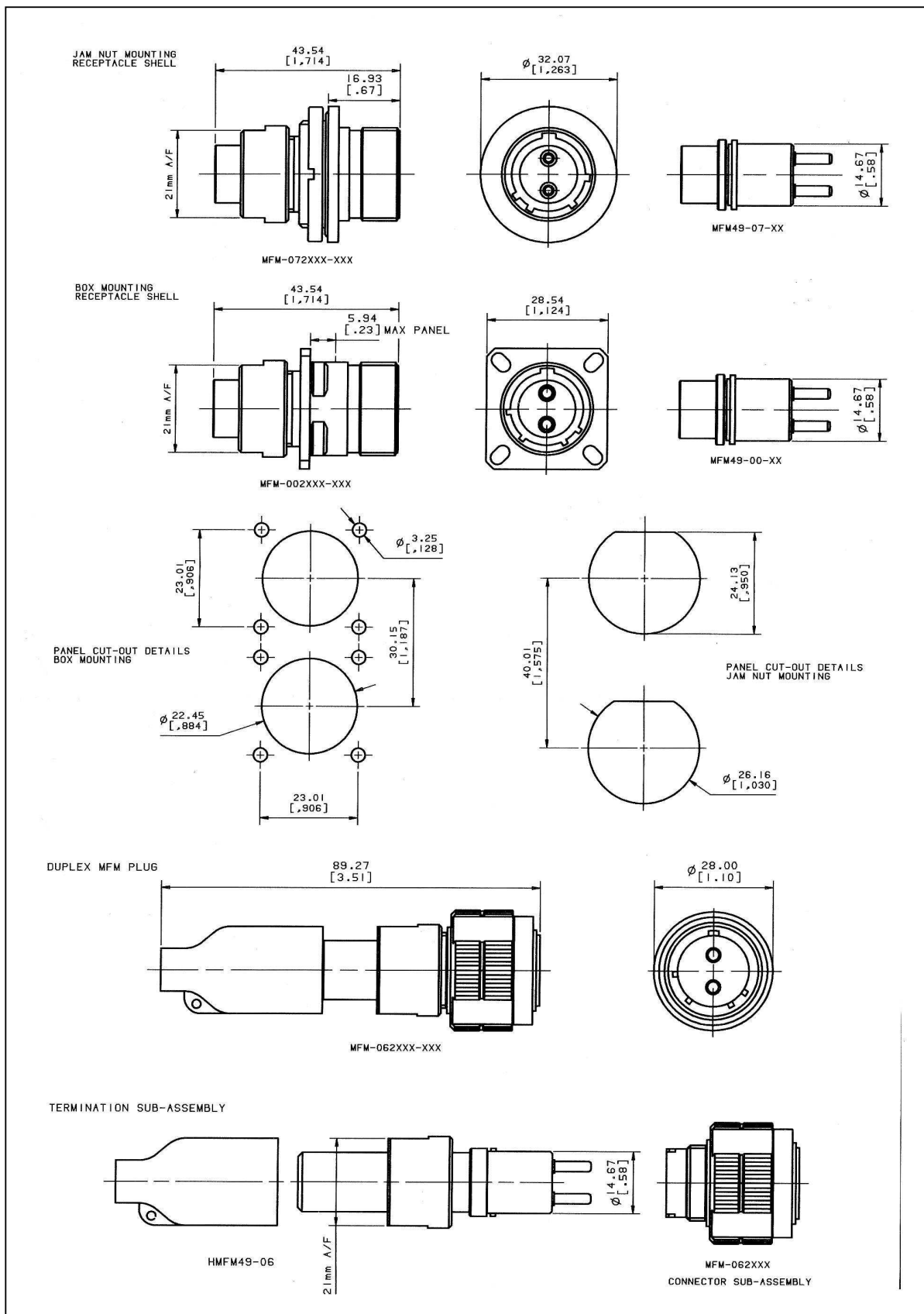
The Duplex MFM is a high performance, lightweight connector, designed and developed specifically for the harsh environment.

- The MFM uses ceramic ferrule technology, with a ceramic alignment sleeve to reduce insertion loss
- Based on a Size 13 38999 Series III connector with keyway polarisation
- One piece monobloc termination construction for ease of cleaning
- Both shells and ferrules are keyed for optimum repeatability
- Environmentally sealed when mated
- Simple termination procedure
- Interchangeable cable sub-assembly with other Amphenol product series

Amphenol

Visit our Website @
www.amphenol.co.uk

MFM Series – Military Fibre Optic Miniature



Performance

Optical	
Attenuation	Typically 0.3dB with 62.5/125 cable
Repeatability	>0.15dB
Fibre Types	50/125 62.5/125
	9/125 100/140
Termination Method	Epoxy / Polish

Environmental	
Temperature Range	-55°C to +125°C Cable dependent
	As per 38999 Series III

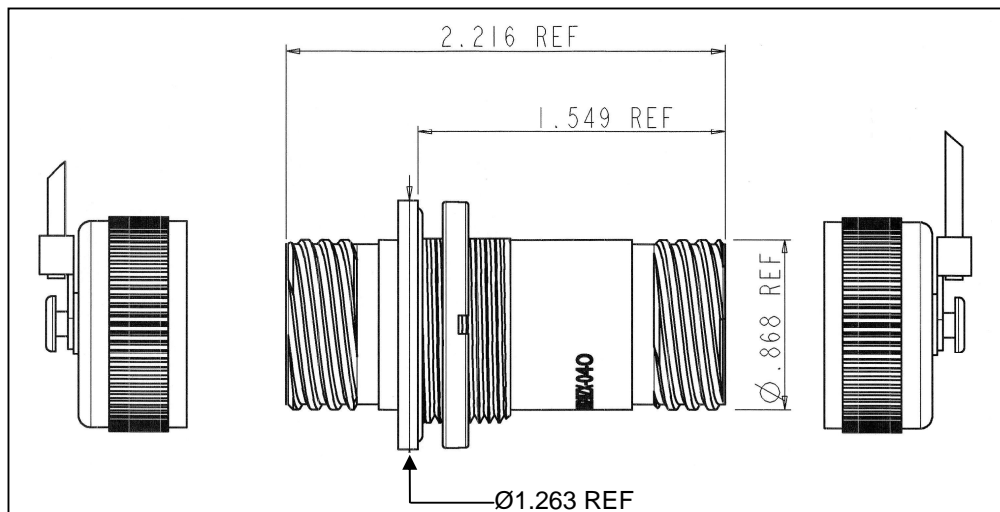
Mechanical	
Durability	>500 matings
Materials	Shell : Electroless Nickel or Olive Drab plated
	Ferrule : Zirconia Ceramic
	Alignment Sleeve : Zirconia Ceramic
	Seals : Silicone

Termination Tooling	
Basic Kit	927 – 100 – 3000
Duplex MFM Add on Kit	927 – 100 – 3200
Consumable Pack	927 – 100 – 6000

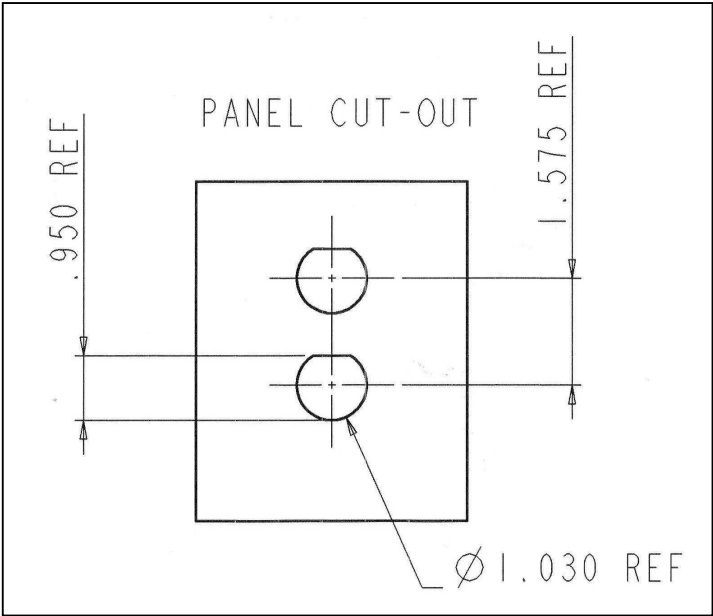
Other items of tooling may be ordered separately – please consult factory.

Adapter Part Nos: **MFM072-BZN-040** for 'N' orientation

MFM072-BZA-040 for 'A' orientation



Panel Cut-Out Details



Protective Caps	
Plug Protective Cap	Standard Size 13 38999 Series III protective Caps
Receptacle Protective Cap	

418-603X - 13XXXXX - 0X

Series _____

Eyelet _____

0 = No eyelet/Cord
1 = Cord + Crimp Ferrule
2 = Cord + large Eyelet
3 = Cord + Small Eyelet
4 = Cord + Small Eyelet + Split Ring

Style _____

P – Plug
R – Receptacle

Cord length _____

000 = No Cord
040 = 50mm
060 = 150mm
090 = 230mm
120 = 300mm

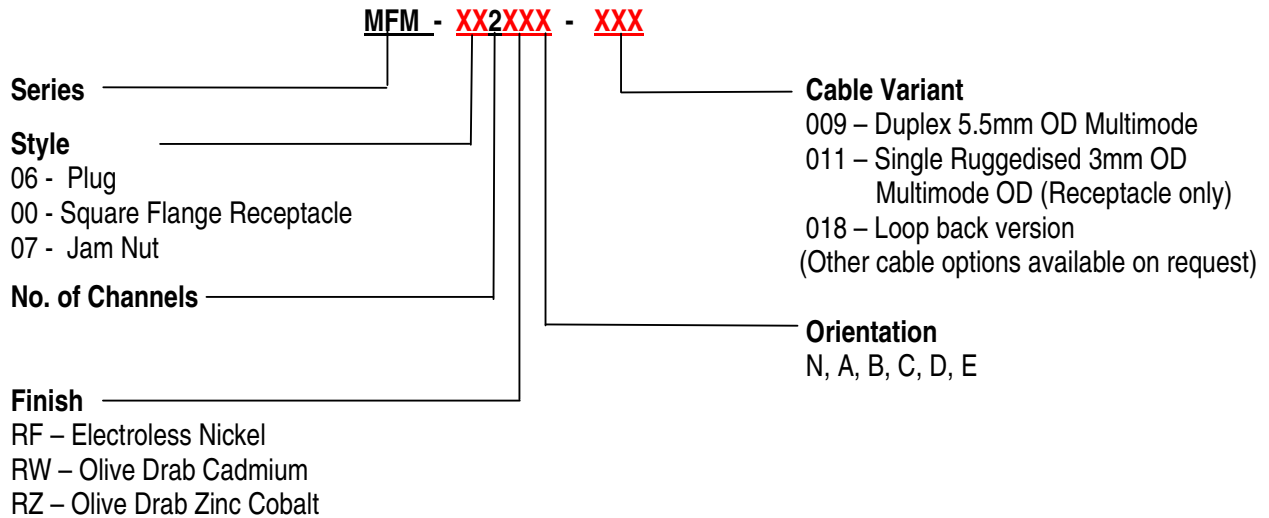
Finish _____

3 - Olive Drab Cadmium
4 - Olive Drab Zinc Cobalt
5 – Electroless Nickel

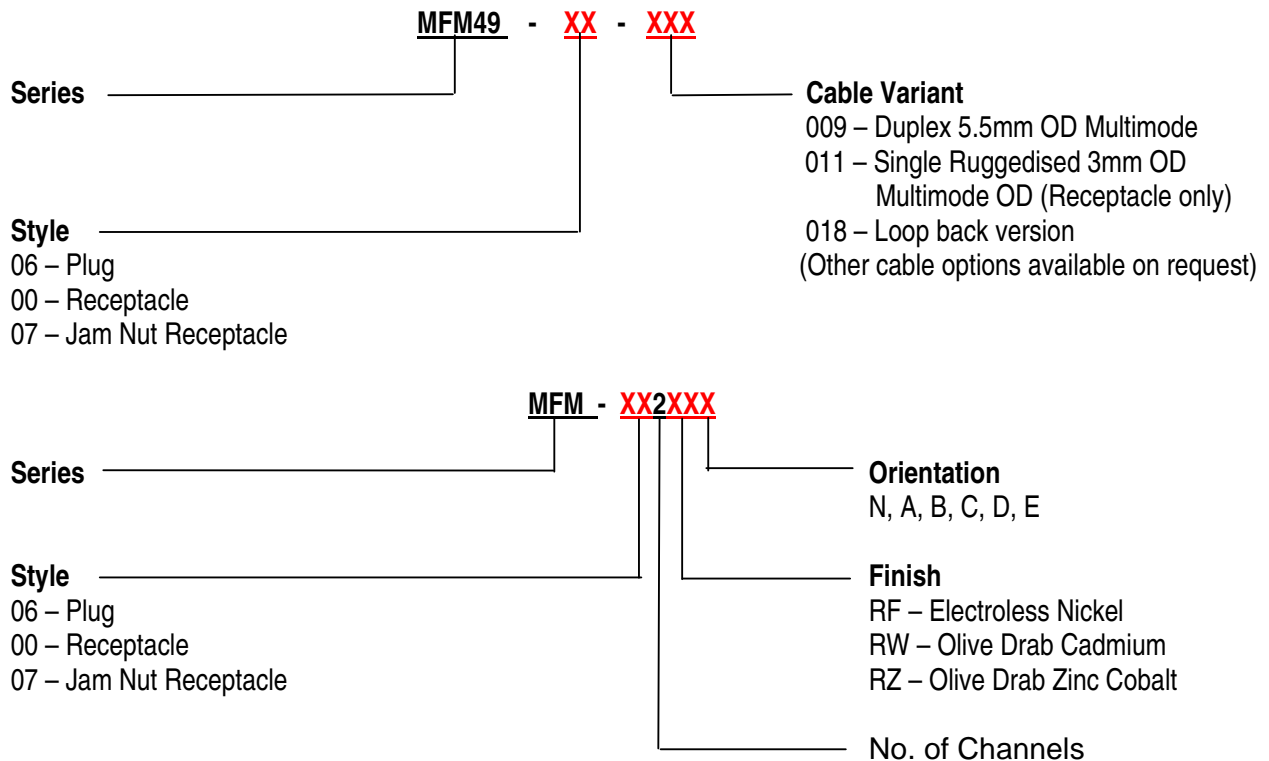
Cord Type _____

0 = No Cord
1 = Black Terelene cord
2 = Stainless steel chain
3 = Plastic covered wire rope

Part Number Information



Sub-Assemblies



Notice: Products are sold subject to Amphenol's conditions of sale ("the standard conditions"). All specifications and statements contained herein are believed to be correct at the time of printing but no representation or warranty, express or implied, is given as to any specification or statement contained herein. Product specifications including performance characteristics are typical only and subject to deviation. Specifications are also subject to change without notice. Users should not assume that all safety measures are indicated or that other measures may not be required. No representation or warranty, express or implied, is given that any use of products (including any stated or suggested use) does not infringe any patent, registered design or other third party rights and no stated or suggested use of products can be taken to recommend any such infringement.